

Linear Kit 2

Aluminium graphic frame ideal for displaying printable rigid infill substrates or mag taped graphics.



features & benefits

- Overall assembled size 2000mm (h) x 1400mm (w) x 400mm (d) approx
- Anodised aluminium construction
- Portable, easy assembly
- Available with round or oval profile post options
- Steel oval bases supplied as standard
- 450mm dia steel dome or thermoformed MDF base options also available
- Choice of two recommended graphic fixing options: Rigid infill or mag taped graphics
- Kits are supplied with 1 roll of adhesive backed steel tape enabling mag taped graphics to be easily displayed

Post options



75mm round



75mm oval

Base options



Steel oval supplied as std
(weight 2kg approx)



450mm dia Steel dome extra cost option
(weight 7.5kg approx)

Recommended carry bag: LPB



Thermoformed MDF extra cost option
(weight 0.5kg approx)

Recommended carry bag: LPB1



Graphic fixing options



Rigid infill



Mag taped

hardware & graphic specifications

Hardware dimensions (mm):

2000 (h) x 1220 (w) x 400 (d) approx

Weight:

13.5kg approx
(based upon Steel oval bases)

Recommended graphic substrates:

Rigid infill:

5mm thick foam board

Mag taped:

300micron polyester

Graphic dimensions (mm):

Rigid infill (1 panel):

1922 (h) x 772 (w) actual
1910 (h) x 760 (w) visible

Rigid infill (2 individual panels):

945 (h) x 772 (w) actual
933 (h) x 760 (w) visible

Mag taped graphic:

2000 (h) x 850 (w) actual
2000 (h) x 850 (w) visible

additional info

Recommended accessories:



LN112 Literature holder



PS1000 200watt light
(see over for fixing method)



LN111 LCD Bracket



AC504 Wheeled carry case

We are continually improving and modifying our product range and reserve the right to vary the specifications without prior notice. All dimensions and weights quoted are approximate and we accept no responsibility for variance. E&OE.

REV 2 01/08

Assembly Instructions

Linear Kit 4 includes:



Steel oval base & M10 bolt x 2
(weight 4kg approx)



Female post x 2
(weight 2.5kg approx)



1 x Roll of Steel tape
(use with Mag taped graphics)



Male post x 2
(weight 2.5kg approx)



1000mm female beam x 2
(weight 1kg approx)



1000mm male beam x 2
(weight 1kg approx)



760mm horizontal beam 'A' x 3
(weight 1.5kg approx)



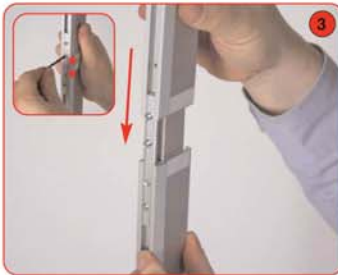
Allen key set



PVC clear washer x 2



100mm beam x 4
(weight 1kg approx)



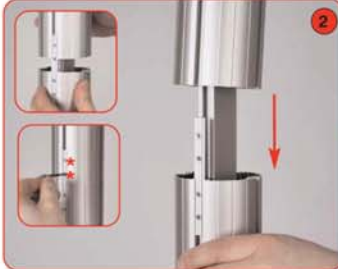
Attach 1000mm male beam to 1000mm female beam. Secure grub screws using a 2mm allen key. Repeat step for 2nd vertical side



Optional PS1000 lights (not supplied with the kit) can be fitted to the graphics rail using the **US-LINEAR** lighting bracket.



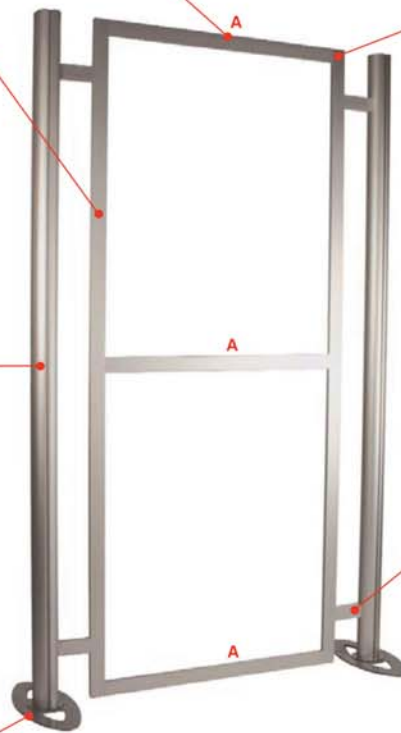
Attach horizontal beams to the vertical frame sides. Tighten locks using a 5mm allen key. If using rigid infill graphics, slide these in to position before tightening beams.



Align and slide female post over male post, tighten both grub screws using a 2mm allen key. Repeat step for 2nd post.



Attach base to male post using M10 bolt and allen key. Ensure clear washer is between base & post. Repeat step for 2nd post.



Attach assembled frame to vertical posts using 4 x 100mm beams. Tighten locks using a 5mm Allen key.

Notes:

1, Use suitable tin-snips to cut the steel tape to the required lengths

2, If applicable, ensure all applied steel tape is facing to the correct side during assembly.